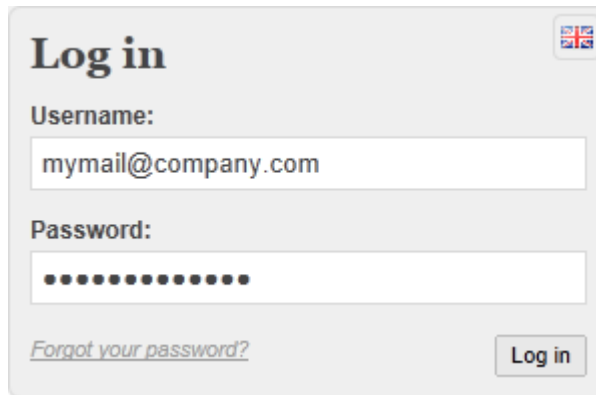



Tutorial: Mark a location on the map



- In this tutorial you will learn how to use the map component.
- This exercise uses the "Hotel booking" application which is available on all trial accounts.

Logging in



Log in 

Username:

Password:

[Forgot your password?](#)

- Go to public.istools.com in your web browser.
- Log in using the account credentials provided in your welcome mail.

Getting familiar

The screenshot displays a multi-paneled hotel booking application interface for 'Mayan Fantasy Bacalar'. The main window is divided into several sections:

- 1 - Client details:** A table with columns for Title, First Name, Last Name, Phone, E-mail, Country, and Registered on. It lists two clients: Prof. Paris Brooks (Canada) and Mr. Brian McArthur (USA).
- 2 - Booking Details:** Fields for Check in (2015-11-03), Check out (2015-11-05), Status (Confirmed), Booking ID (5098), Booking Total (\$310), and Guests (1).
- 3 - Rooms and extras:** A dropdown menu for 'Room' (Chichen Itzá (single)), a suggested limit table, a room image, and a price of 300.
- Room editor:** A sub-window titled 'Choose a Hotel to add/edit rooms' showing a table of hotel rooms.
- Dashboard:** A summary view showing 'Hotel Information' and 'AVAILABLE ROOMS BY TYPE'.

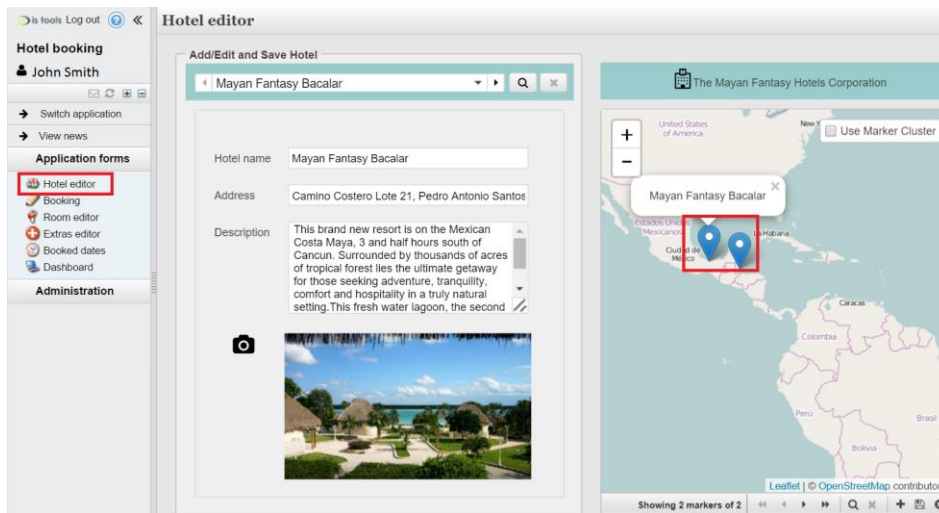
Room	RoomType	Adults Limit	Children Limit	Available Today
Chichen Itzá (sin	Single Room	2	1	true
Copán (double)	Double Room	2	2	true
Nicté (single)	Single Room	2	0	true
Sayil (single)	Single Room	2	0	true
Tikal (double)	Double Room	4	2	true
Tulum (double)	Double Room	2	2	true
Xelhá (double)	Double Room	2	2	true

Rooms to be checked in Today	0	Double Room	4	Single Room	3
Rooms with Status Pending Today	0				
Available Rooms Today	7				

Staying Tonight	0	Checking In Today	0	Checking out today	0
Adults	0	Adults	0	Adults	0
Children	0	Children	0	Children	0

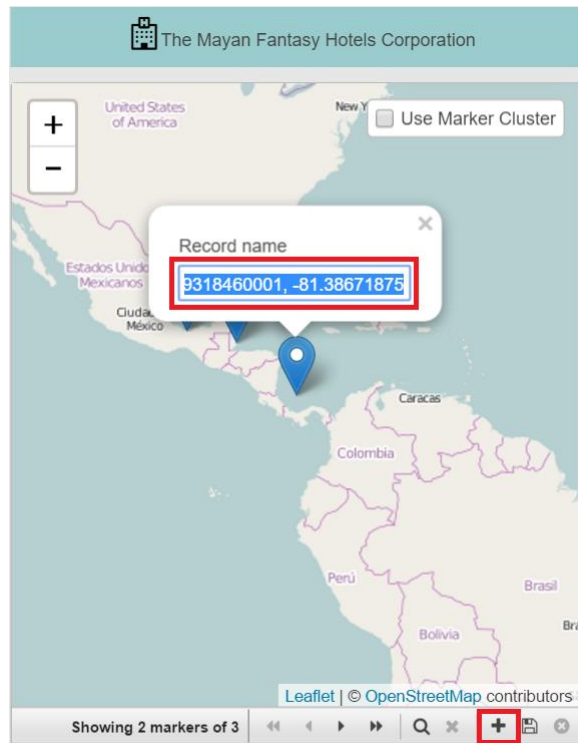
- In the main menu, expand the "Application forms" folder and click on the form entries.
- Take a minute to familiarize yourself with the existing forms of the application.
- In this exercise, our goal is to mark a new hotel's location on the map.

Application form with map



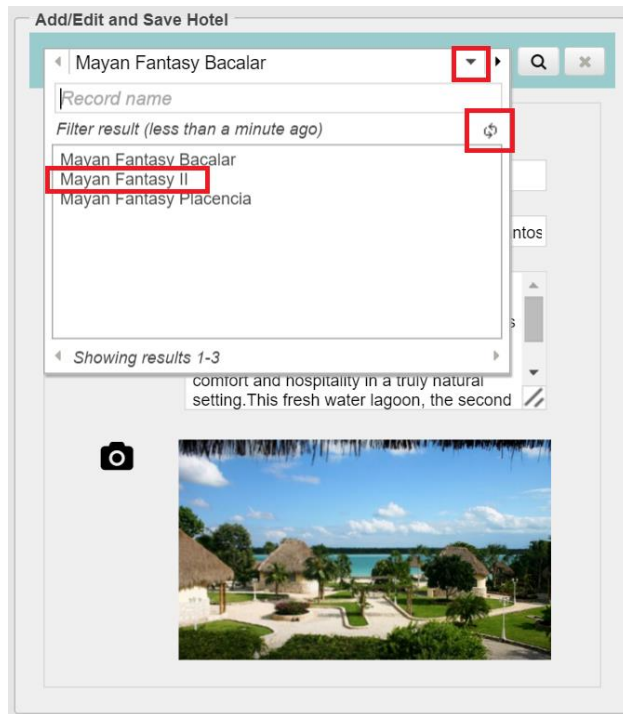
Open the "Hotel editor" form, where the location of two hotels can be seen marked on the map.

Adding a new hotel on the map



- Let's create a new hotel by adding a new marker on the map.
- Click on the Plus icon (here marked on the bottom right).
- Note that the marker initially has its geographical coordinates as its name. Change it to your hotel's name instead.
- Move the marker to the desired location. For this, you can zoom in or out to find a specific place.
- Click on the Save icon.

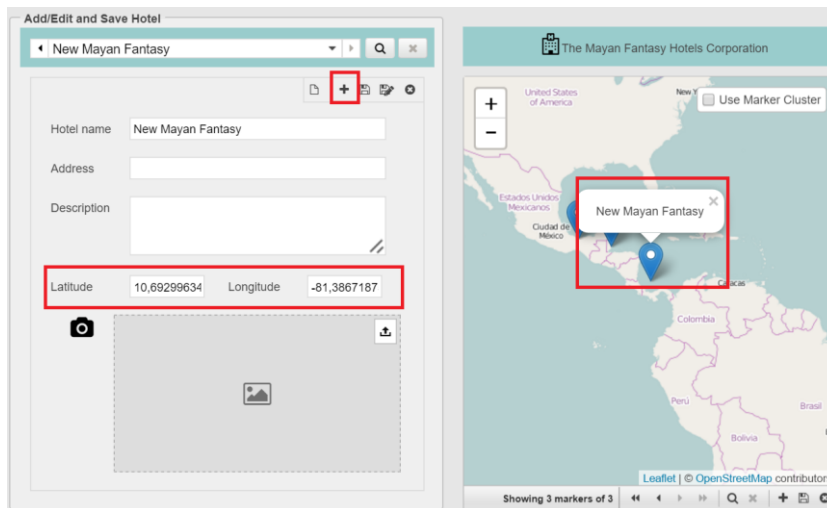
Displaying the new hotel



- Note that the saved location can be seen as a new hotel in the section to the left. For this, drop down the Record selector and click on the Refresh icon.
- Select the new hotel. If you like, enter additional information and save.

Other ways to add markers

- Optionally, instead of using the Plus icon, zoom in as much as you want to find a location on the map and then double-click to add a new marker.



- You can also add a marker in an indirect way by first creating the new hotel in the section to the left, and then entering the geographical coordinates in the fields called "Latitude" and "Longitude" (see how to add fields to the form in our "Asset manager" demo tutorial or on our Youtube channel).



Your tailor made **cloud** applications

